



**REGIONAL SPECIALISED METEOROLOGICAL CENTRE -TROPICAL CYCLONES, NEW DELHI**  
**TROPICAL WEATHER OUTLOOK**

**DEMS-RSMC TROPICAL CYCLONES NEW DELHI DATED 18.07.2025**

**TROPICAL WEATHER OUTLOOK FOR THE NORTH INDIAN OCEAN (THE BAY OF BENGAL OF BENGAL AND THE ARABIAN SEA) VALID FOR THE NEXT 168 HOURS ISSUED AT 0600 UTC OF 18.07.2025 BASED ON 0300 UTC OF 18.07.2025.**

**LAND:**

**Depression over northwest Madhya Pradesh & adjoining Southwest Uttar Pradesh**

Yesterday's depression over Southeast Uttar Pradesh moved west-northwestwards and lay over northwest Madhya Pradesh & adjoining Southwest Uttar Pradesh at 0300 UTC of today, the 18<sup>th</sup> July, 2025. It is likely to move west-northwestwards across northwest Madhya Pradesh and east Rajasthan and weaken gradually into a well-marked low-pressure area during next 24 hours.

As per INSAT 3D Imagery, scattered to broken low and medium clouds with embedded intense to very intense convection lay over southwest Uttar Pradesh, north Madhya Pradesh, Rajasthan (minimum Cloud Top Temperature -70°C to -90°C).

**BAY OF BENGAL:**

Scattered to broken low and medium clouds with embedded intense to very intense convection lay over northeast Bay of Bengal, central & southwest Bay of Bengal, Andaman Sea, Arakan coast, Gulf of Martaban & Tenasserim coast. Scattered low and medium clouds with embedded moderate to intense convection lay over southeast Bay of Bengal and isolated weak to moderate convection lay over northwest Bay of Bengal.

**\*PROBABILITY OF CYCLOGENESIS (FORMATION OF DEPRESSION) DURING NEXT 168 HRS:**

24 HOURS	24-48 HOURS	48-72 HOURS	72-96 HOURS	96-120 HOURS	120-144 HOURS	144-168 HOURS
NIL	NIL	NIL	NIL	NIL	NIL	NIL

**\*NOTE: EVERY 24HR FORECAST IS VALID UPTO 0300 UTC (0830 IST) OF NEXT DAY**

**ARABIAN SEA:**

Scattered to broken low and medium clouds with embedded intense to very intense convection lay over southeast Arabian Sea off Kerala coast & Lakshadweep Islands area. Scattered low and medium clouds with embedded moderate to intense convection lay over eastcentral Arabian Sea, Maldives & Comorin area and isolated weak to moderate convection lay over rest of Arabian Sea.

**\*PROBABILITY OF CYCLOGENESIS (FORMATION OF DEPRESSION) DURING NEXT 168 HRS:**

24 HOURS	24-48 HOURS	48-72 HOURS	72-96 HOURS	96-120 HOURS	120-144 HOURS	144-168 HOURS
NIL	NIL	NIL	NIL	NIL	NIL	NIL

**\*NOTE: EVERY 24HR FORECAST IS VALID UPTO 0300 UTC (0830 IST) OF NEXT DAY**

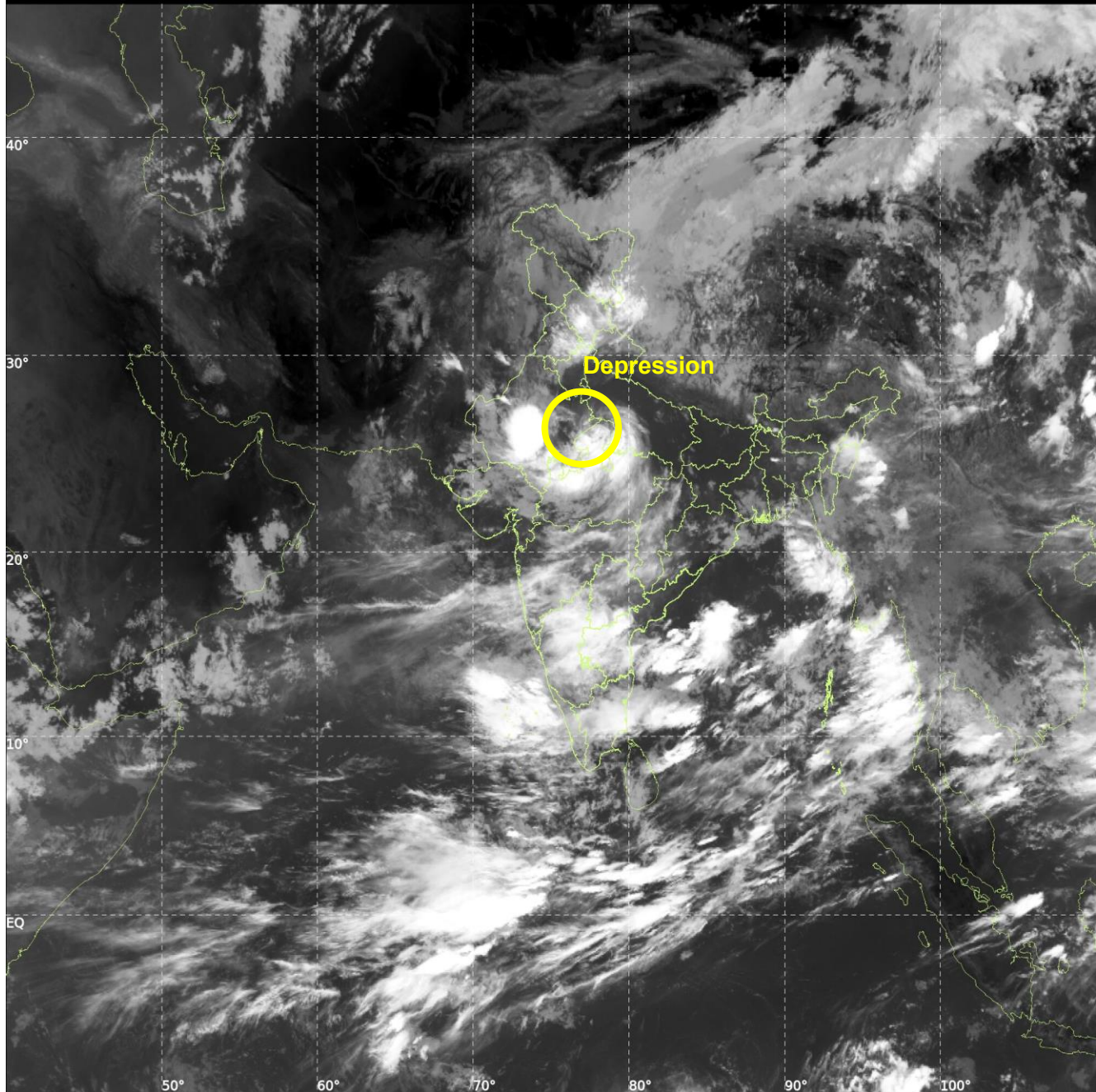
**REMARKS: NIL**



INSAT-3DS IMG, Thermal Infrared1 Count @ 10.83  $\mu\text{m}$   
GMT:18-07-2025/(0300-0327) IST:18-07-2025/(0830-0857)  
L1C MERCATOR (LINEAR STRETCH: 1%)

421

899



Cloud distribution: (a) Isolated: <25%, Scattered:25-50%, Broken: 51-75%, Solid:>75%, Convection Intensity: (a) Weak: Cloud Top Temperature(CTT)>-25°C,(b)Moderate:CTT:-25°Cto-40°C,(c)Intense:CTT: -41°Cto -70°Cand(d)Very Intense::Less than -70°C  
PROBABILITYOFCYCLOGENESIS(FORMATIONOFDEPRESSION):NIL:0%,LOW:1-33%,MODERATE:34-66%ANDHIGH:67-100%  
ThisisaguidanceBulletinforWMO/ESCAPPanelMembercountries.VisitrespectiveNationalwebsitesforCountryspecificBulletins